

Report No.:

Test Time: 2022-06-29 16:25:54

## LUMINAIRE PHOTOMETRIC TEST REPORT

### Luminaire Property

Manufacturer: rayhil  
Luminaire Type: Que20-30-360-BK  
Lamp Type:  
Luminous Width: 60 mm  
Luminous Length: 60 mm  
Luminous Height: 60 mm

Voltage(V): 48.00 V  
Current(A): 0.0850 A  
Power(W): 4.08 W  
Power Factor: 1.0000  
Lamp Luminous Flux: 200.44

### Photometric Results

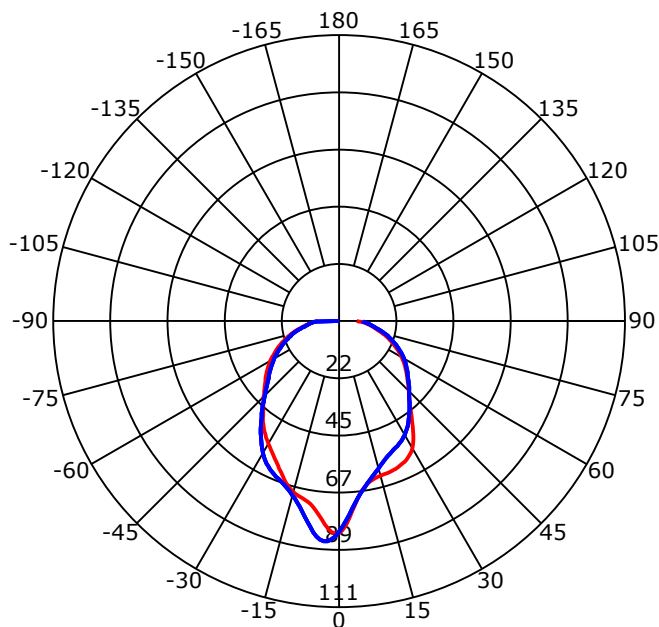
CIE Class: Direct  
Luminaire Luminous Flux: 200.4449 lm  
Downward Ratio: 100.00%  
Luminaire Efficacy Rating(LER): 49.13 lm/W  
Beam Angle(50%) C0-180,C90-270: 86.6,82.9  
Field Angle(10%) C0-180,C90-270: 178.5,93.1  
S/MH C0-180,C90-270: 1.019,0.975

Max. Intensity: 89.02 cd  
Max.Intensity Angle: C=300 Gamma=3  
Upward Ratio: 0.00%  
Efficacy: 100.00%  
Center Intensity: 82.50 cd  
Effective Luminous Flux: 199.93 lm  
ERP( $\phi$ use)(120deg): 143.66 lm

Picture of Luminaire



Luminous Intensity Distribution Curve



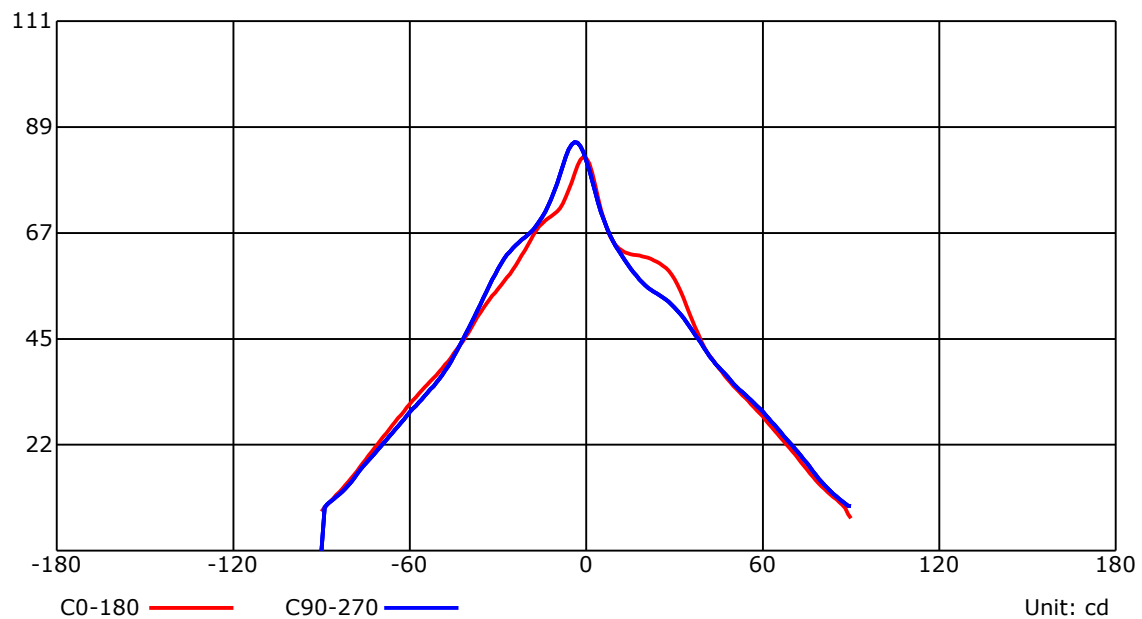
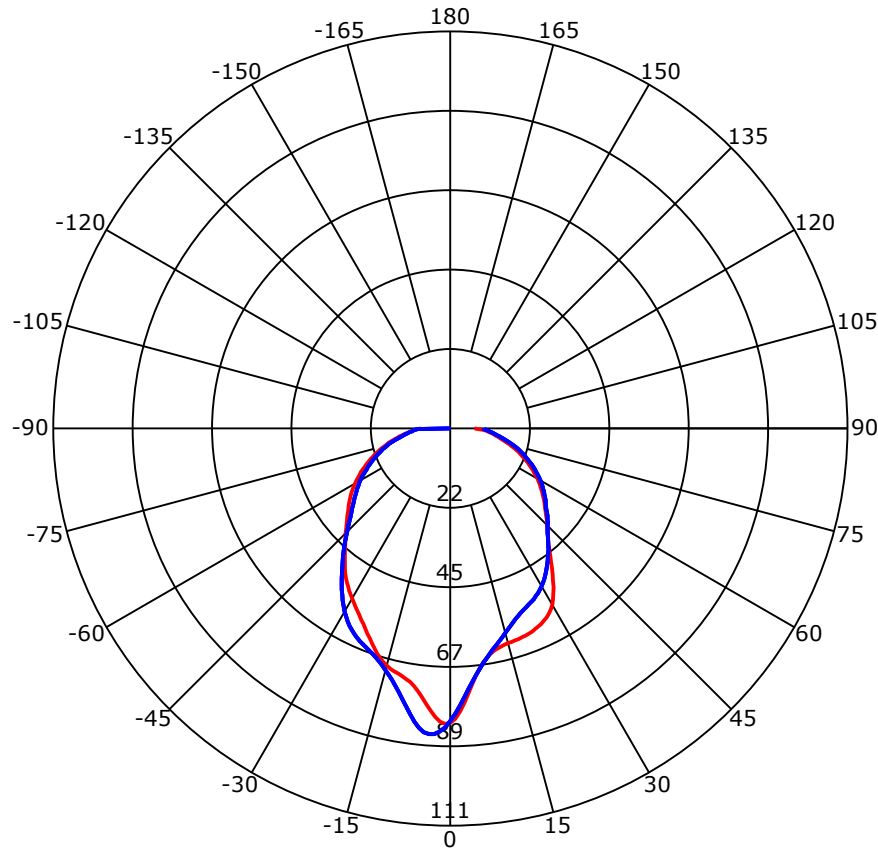
Beam Angle(50%) C0-180,C90-270: 86.6 deg,82.9 deg

C0-180 — C90-270 —

C Range: 0 - 360 Deg  
C Interval: 30.0 Deg  
Test Speed: High  
Temperature:  
Operators:  
Test Date: 2022-06-29 16:25:54

G Range: 0 - 90 Deg  
G Interval: 1.0 Deg  
Test System: Huipu CPM-1800B Goniophotometer  
Humidity:  
Test Distance: 8.86 m  
Remarks:

## Luminous Intensity Distribution Curve



C Range: 0 - 360 Deg

C Interval: 30.0 Deg

Test Speed: High

Temperature:

Operators:

Test Date: 2022-06-29 16:25:54

G Range: 0 - 90 Deg

G Interval: 1.0 Deg

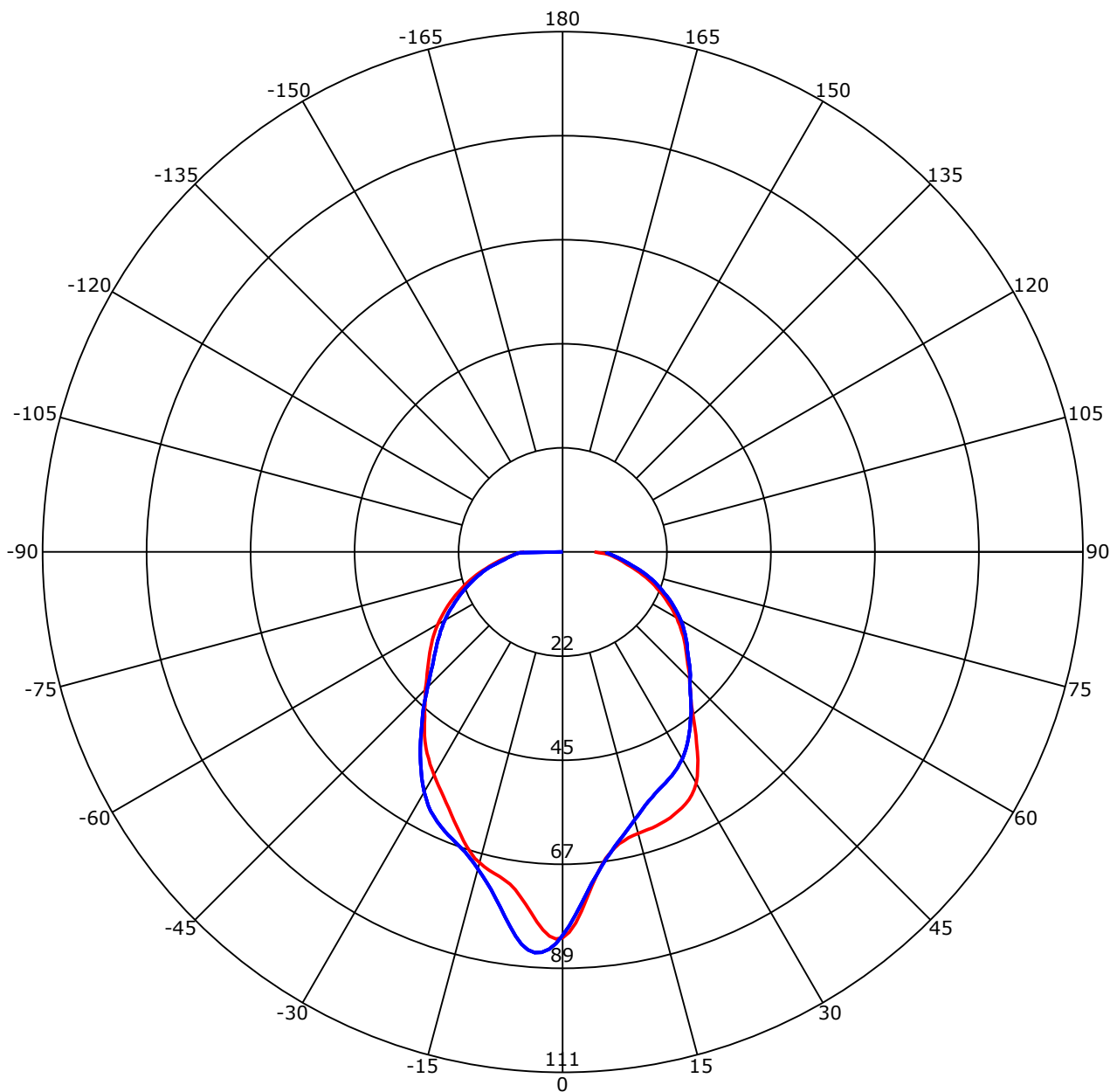
Test System: Huipu CPM-1800B Goniophotometer

Humidity:

Test Distance: 8.86 m

Remarks:

## Luminous Intensity Distribution Curve



C0-180 — C90-270

Unit: cd/klm

C Range: 0 - 360 Deg

C Interval: 30.0 Deg

Test Speed: High

Temperature:

Operators:

Test Date: 2022-06-29 16:25:54

G Range: 0 - 90 Deg

G Interval: 1.0 Deg

Test System: Huipu CPM-1800B Goniophotometer

Humidity:

Test Distance: 8.86 m

Remarks:

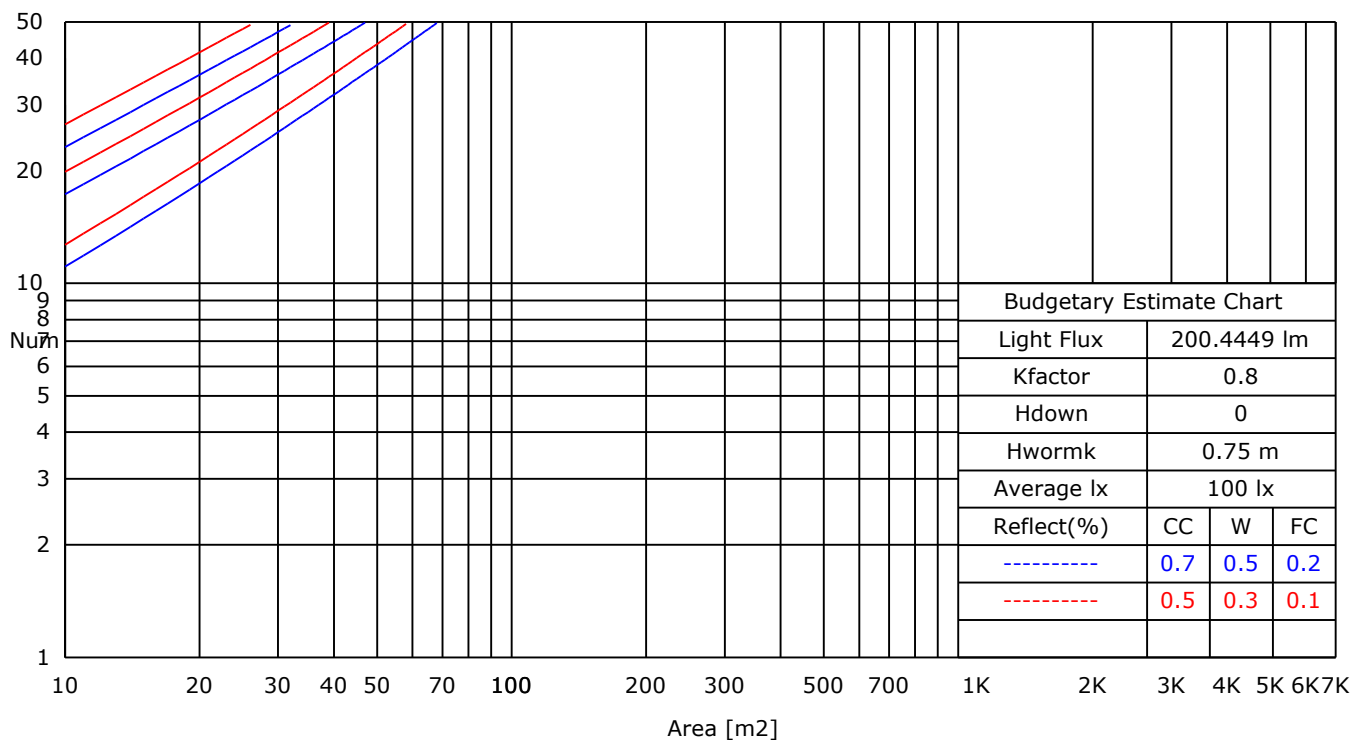
Report No.:

Test Time: 2022-06-29 16:25:54

## UTILIZATION FACTORS TABLE

RHOCC	80			70			50			30			10			0
RHOW	50	30	10	50	30	10	50	30	10	50	30	10	50	30	10	0
RCR	COEFFICIENTS OF UTILIZATION FOR RHOFC=20															
0	1.19	1.19	1.19	1.16	1.16	1.16	1.11	1.11	1.11	1.06	1.06	1.06	1.02	1.02	1.02	1.00
1	1.04	1.03	1.01	1.03	1.01	0.99	1.00	0.97	0.95	0.95	0.92	0.90	0.88	0.86	0.84	0.79
2	0.91	0.89	0.87	0.90	0.87	0.85	0.88	0.84	0.82	0.84	0.81	0.77	0.80	0.76	0.72	0.68
3	0.80	0.77	0.75	0.80	0.76	0.74	0.78	0.74	0.71	0.76	0.71	0.67	0.72	0.67	0.63	0.59
4	0.71	0.68	0.66	0.71	0.67	0.65	0.70	0.66	0.62	0.68	0.63	0.59	0.66	0.60	0.56	0.52
5	0.64	0.61	0.59	0.64	0.60	0.58	0.64	0.59	0.56	0.62	0.57	0.53	0.61	0.55	0.50	0.46
6	0.58	0.55	0.53	0.58	0.55	0.52	0.58	0.53	0.50	0.57	0.52	0.48	0.56	0.50	0.45	0.42
7	0.53	0.50	0.49	0.53	0.50	0.48	0.53	0.49	0.46	0.53	0.48	0.44	0.52	0.46	0.41	0.38
8	0.48	0.46	0.45	0.49	0.46	0.44	0.49	0.45	0.42	0.49	0.44	0.40	0.49	0.43	0.38	0.35
9	0.45	0.43	0.41	0.45	0.42	0.40	0.46	0.42	0.39	0.46	0.41	0.37	0.46	0.40	0.35	0.32
10	0.42	0.40	0.38	0.42	0.39	0.38	0.43	0.39	0.36	0.43	0.38	0.34	0.43	0.37	0.33	0.30

## LUMINAIRE BUDGETARY ESTIMATE DIAGRAM



C Range: 0 - 360 Deg

C Interval: 30.0 Deg

Test Speed: High

Temperature:

Operators:

Test Date: 2022-06-29 16:25:54

G Range: 0 - 90 Deg

G Interval: 1.0 Deg

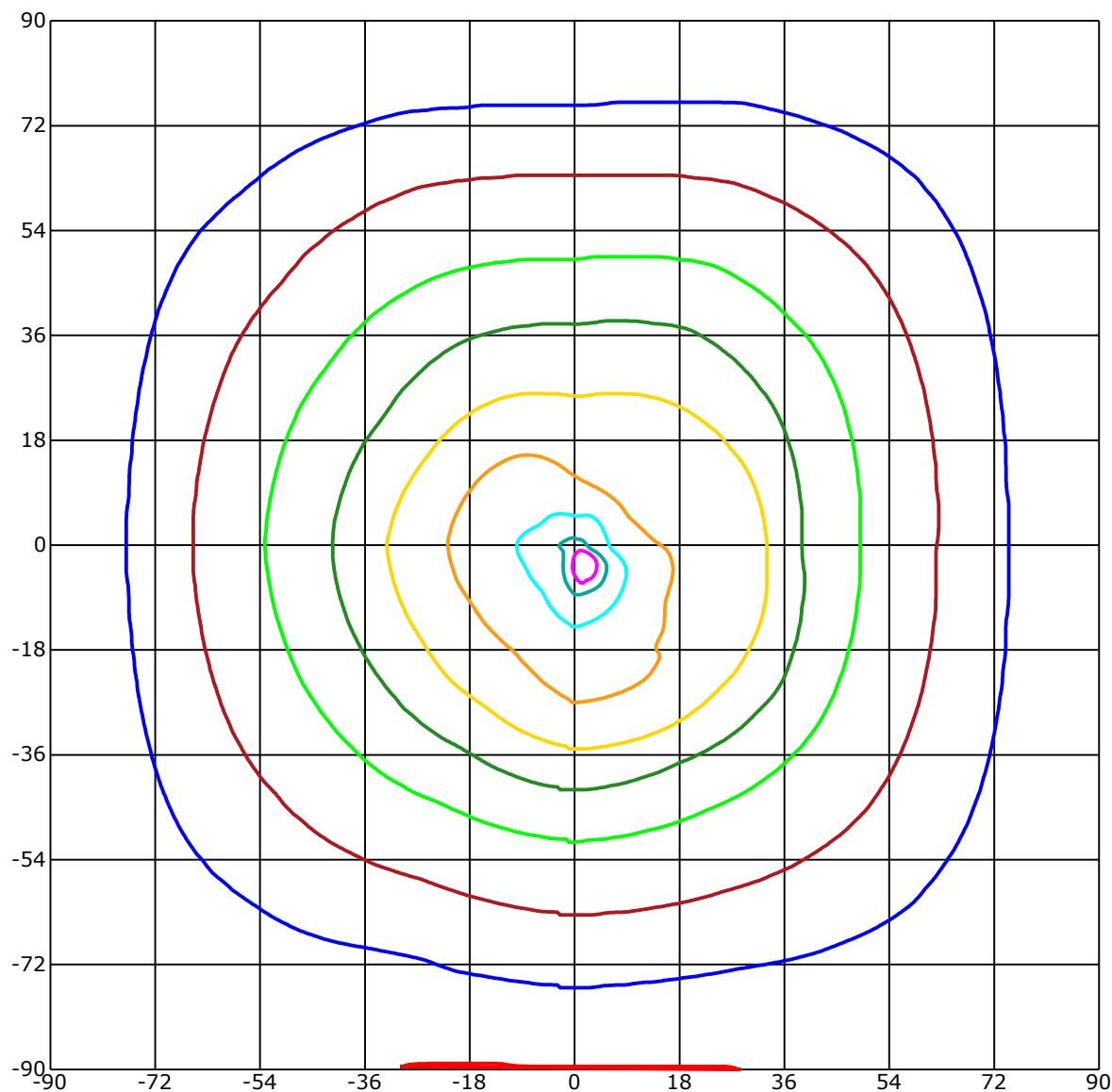
Test System: Huipu CPM-1800B Goniophotometer

Humidity:

Test Distance: 8.86 m

Remarks:

## ISOCANDELA DIAGRAM (RECTANGULAR)



Unit of intensity:cd    I<sub>max</sub>(100%): 89.019 cd

84.568(95%I <sub>max</sub> )	44.509(50%I <sub>max</sub> )
80.117(90%I <sub>max</sub> )	35.607(40%I <sub>max</sub> )
71.215(80%I <sub>max</sub> )	26.706(30%I <sub>max</sub> )
62.313(70%I <sub>max</sub> )	17.804(20%I <sub>max</sub> )
53.411(60%I <sub>max</sub> )	8.902(10%I <sub>max</sub> )

C Range: 0 - 360 Deg

C Interval: 30.0 Deg

Test Speed: High

Temperature:

Operators:

Test Date: 2022-06-29 16:25:54

G Range: 0 - 90 Deg

G Interval: 1.0 Deg

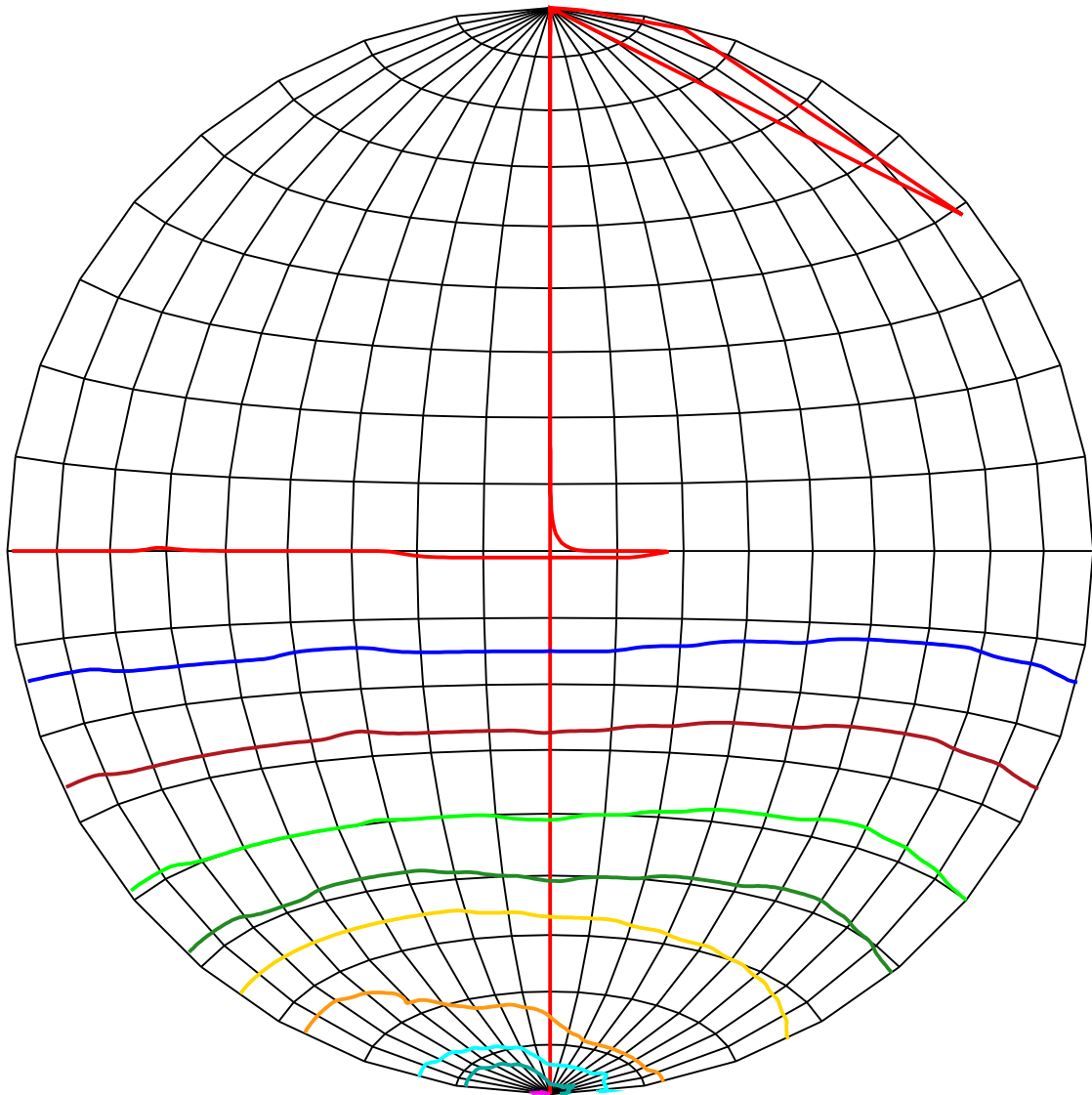
Test System: Huipu CPM-1800B Goniophotometer

Humidity:

Test Distance: 8.86 m

Remarks:

## ISOCANDELA DIAGRAM (SPHERE)



Unit of intensity:cd    I<sub>max</sub>(100%): 89.019 cd

84.568(95%I <sub>max</sub> )	44.509(50%I <sub>max</sub> )
80.117(90%I <sub>max</sub> )	35.607(40%I <sub>max</sub> )
71.215(80%I <sub>max</sub> )	26.706(30%I <sub>max</sub> )
62.313(70%I <sub>max</sub> )	17.804(20%I <sub>max</sub> )
53.411(60%I <sub>max</sub> )	8.902(10%I <sub>max</sub> )

C Range: 0 - 360 Deg

C Interval: 30.0 Deg

Test Speed: High

Temperature:

Operators:

Test Date: 2022-06-29 16:25:54

G Range: 0 - 90 Deg

G Interval: 1.0 Deg

Test System: Huipu CPM-1800B Goniophotometer

Humidity:

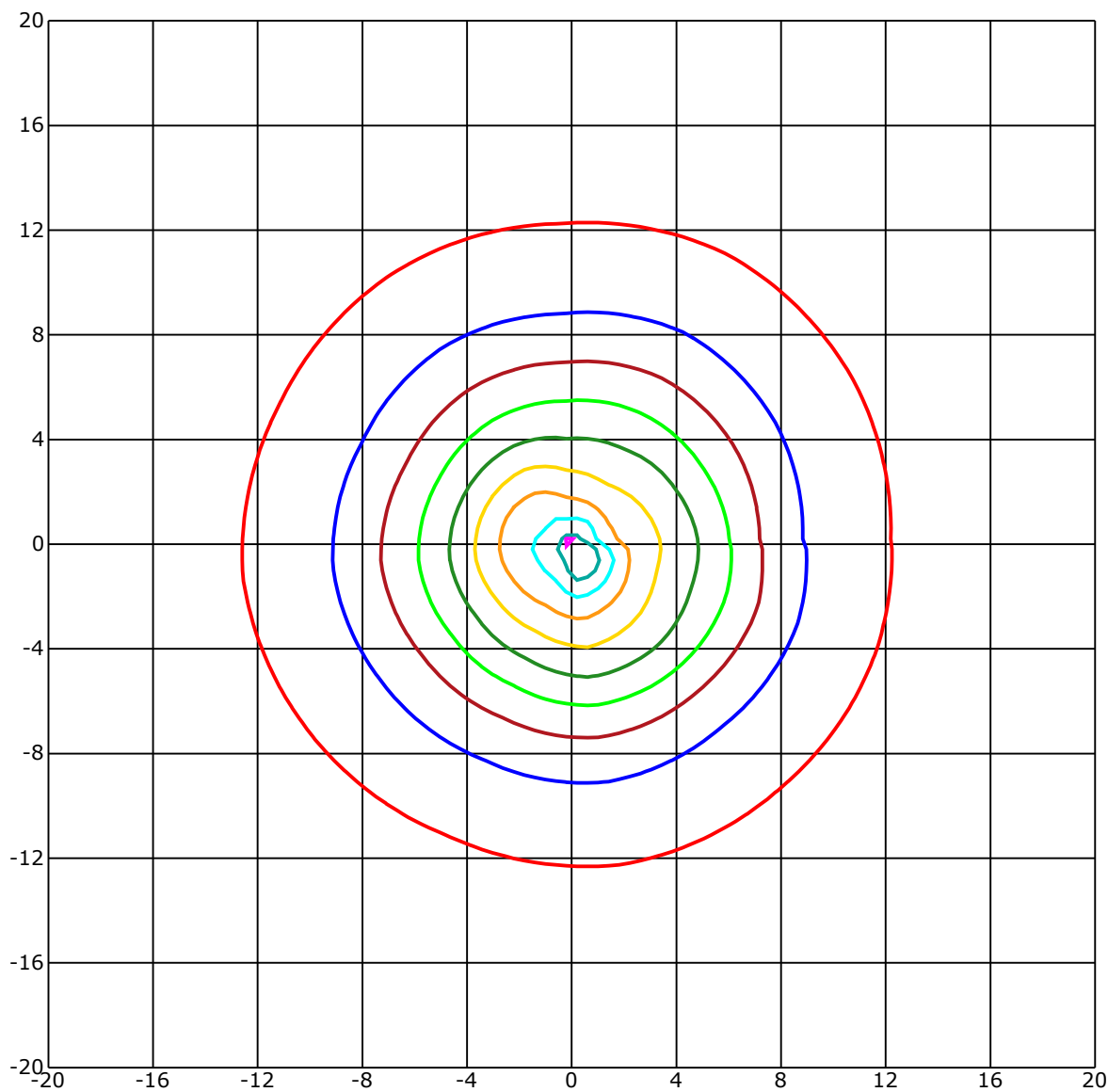
Test Distance: 8.86 m

Remarks:

Report No.:

Test Time: 2022-06-29 16:25:54

## ISOLX DIAGRAM



Unit of illumination:lx

Height of plane:10.0(m)/32.81(ft)

0.816(1%E<sub>max</sub>)

0.798(1%E<sub>max</sub>)

0.709(1%E<sub>max</sub>)

0.621(1%E<sub>max</sub>)

0.532(1%E<sub>max</sub>)

0.443(0%E<sub>max</sub>)

0.355(0%E<sub>max</sub>)

0.266(0%E<sub>max</sub>)

0.177(0%E<sub>max</sub>)

0.089(0%E<sub>max</sub>)

C Range: 0 - 360 Deg

C Interval: 30.0 Deg

Test Speed: High

Temperature:

Operators:

Test Date: 2022-06-29 16:25:54

G Range: 0 - 90 Deg

G Interval: 1.0 Deg

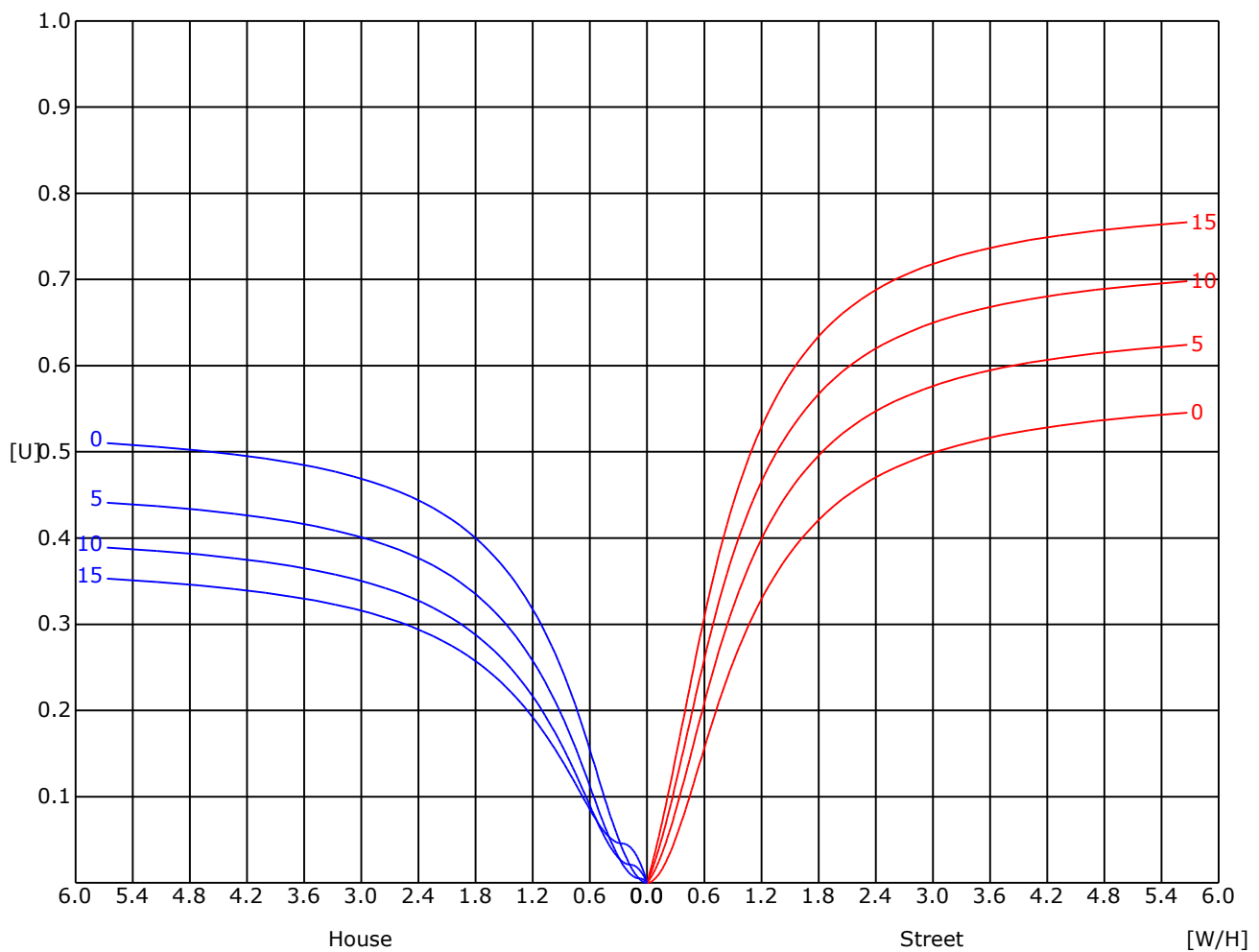
Test System: Huipu CPM-1800B Goniophotometer

Humidity:

Test Distance: 8.86 m

Remarks:

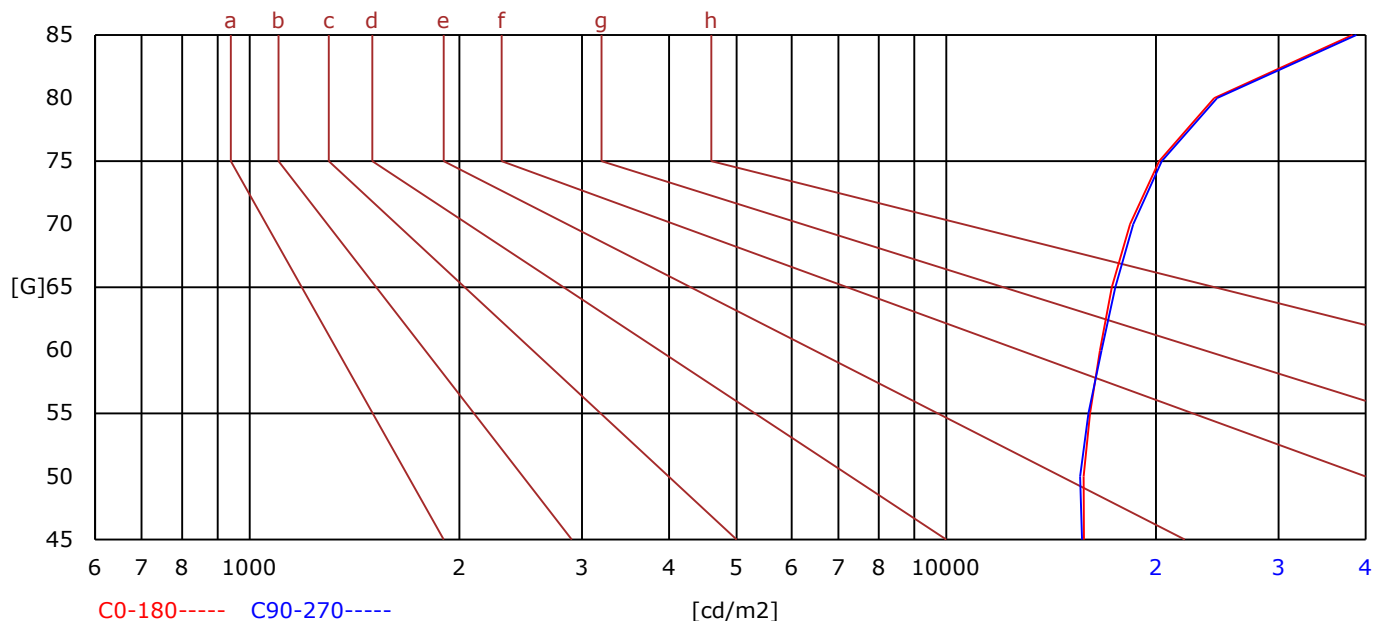
## UTILIZATION FACTOR DIAGRAM (ROAD)





## BRIGHT LIMIT DIAGRAM

C/G	45	50	55	60	65	70	75	80	85
C0	15758	15740	16081	16616	17285	18361	20220	24235	38279
C90	15665	15571	16005	16703	17491	18553	20388	24487	38779
Dazzle	Quality	Illuminance	---	---	---	---	---	---	---
1.15	A	2000	1000	500	<=300				
1.5	B		2000	1000	500	<=300			
1.85	C			2000	1000	500	<=300		
2.2	D				2000	1000	500	<=300	
2.55	E					2000	1000	500	<=300
---	---	a	b	c	d	e	f	g	h



C Range: 0 - 360 Deg

C Interval: 30.0 Deg

Test Speed: High

Temperature:

Operators:

Test Date: 2022-06-29 16:25:54

G Range: 0 - 90 Deg

G Interval: 1.0 Deg

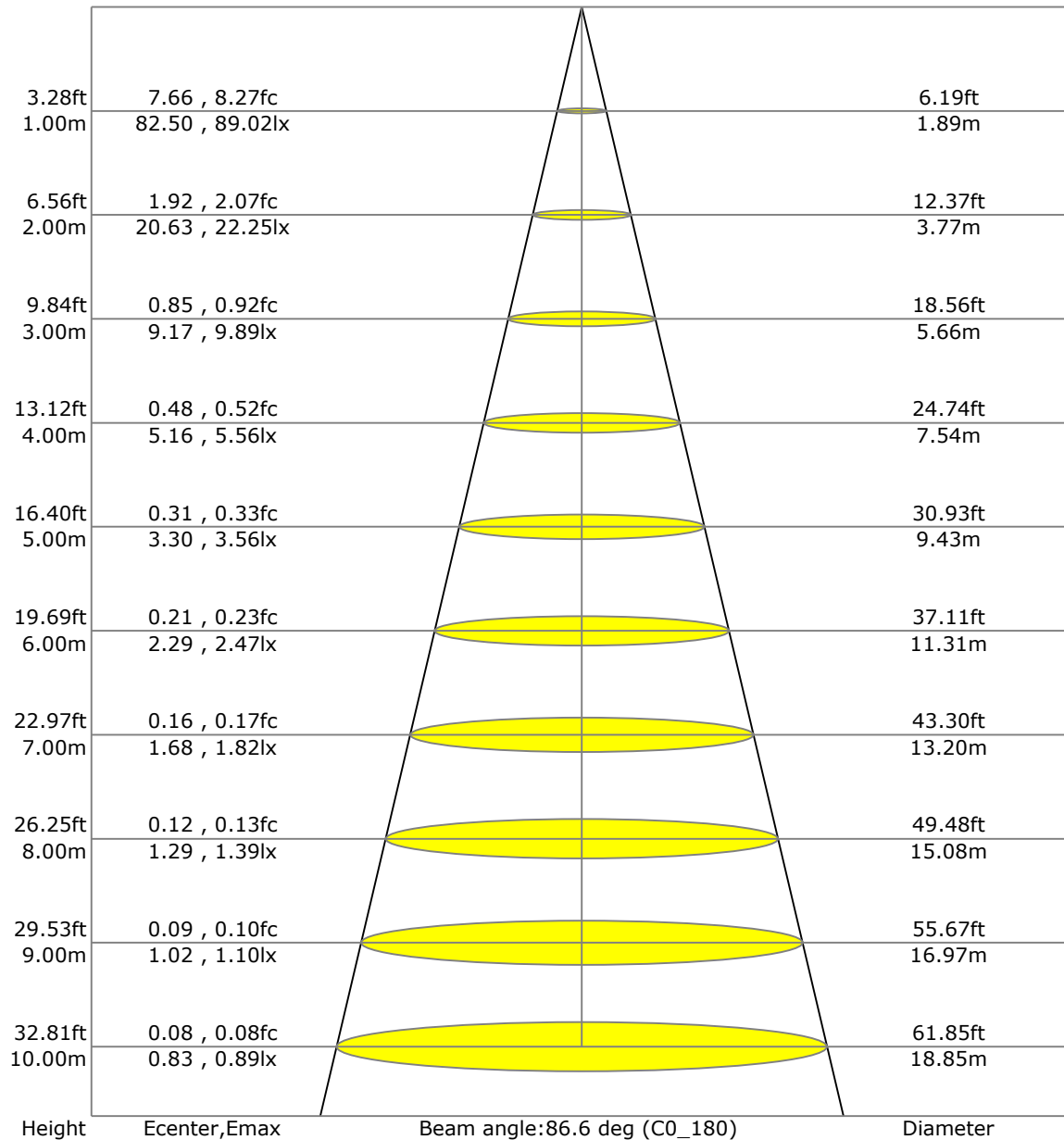
Test System: Huipu CPM-1800B Goniophotometer

Humidity:

Test Distance: 8.86 m

Remarks:

## LX-DISTANCE DIAGRAM



C Range: 0 - 360 Deg

C Interval: 30.0 Deg

Test Speed: High

Temperature:

Operators:

Test Date: 2022-06-29 16:25:54

G Range: 0 - 90 Deg

G Interval: 1.0 Deg

Test System: Huipu CPM-1800B Goniophotometer

Humidity:

Test Distance: 8.86 m

Remarks:

Report No.:

Test Time: 2022-06-29 16:25:54

## UGR(Unified Glare Rating) TABLE

RHOCC	70	70	50	50	30	70	70	50	50	30
RHOW	50	30	50	30	30	50	30	50	30	30
RHOF	20	20	20	20	20	20	20	20	20	20
Room Size X Y	Viewed Endwise					Viewed Crosswise				
2H 2H	26.25	26.34	26.45	26.53	26.77	26.36	26.44	26.56	26.63	26.87
3H	26.50	26.59	26.71	26.78	27.03	26.58	26.66	26.79	26.86	27.11
4H	26.57	26.65	26.78	26.85	27.10	26.64	26.72	26.85	26.91	27.16
6H	26.58	26.66	26.80	26.86	27.11	26.64	26.72	26.86	26.92	27.17
8H	26.56	26.64	26.78	26.84	27.10	26.63	26.70	26.85	26.91	27.16
12H	26.55	26.62	26.77	26.83	27.08	26.61	26.68	26.83	26.89	27.15
4H 2H	29.70	29.78	29.92	29.98	30.23	29.96	30.04	30.18	30.24	30.49
3H	30.20	30.27	30.42	30.48	30.74	30.44	30.51	30.66	30.72	30.97
4H	30.38	30.45	30.61	30.66	30.92	30.59	30.66	30.82	30.88	31.14
6H	30.49	30.55	30.73	30.77	31.04	30.68	30.75	30.92	30.97	31.23
8H	30.51	30.57	30.76	30.80	31.07	30.70	30.76	30.94	30.99	31.26
12H	30.51	30.57	30.76	30.80	31.07	30.70	30.75	30.95	30.99	31.26
8H 4H	31.21	31.28	31.43	31.49	31.74	31.54	31.61	31.76	31.82	32.07
6H	32.63	32.69	32.89	32.93	33.20	32.92	32.97	33.17	33.21	33.49
8H	32.76	32.81	33.02	33.06	33.33	33.03	33.08	33.29	33.32	33.60
12H	32.85	32.89	33.12	33.15	33.43	33.10	33.15	33.37	33.40	33.68
12H 4H	33.01	33.07	33.26	33.30	33.57	33.34	33.40	33.59	33.63	33.90
6H	33.47	33.52	33.73	33.77	34.04	33.79	33.83	34.05	34.08	34.36

C Range: 0 - 360 Deg

C Interval: 30.0 Deg

Test Speed: High

Temperature:

Operators:

Test Date: 2022-06-29 16:25:54

G Range: 0 - 90 Deg

G Interval: 1.0 Deg

Test System: Huipu CPM-1800B Goniophotometer

Humidity:

Test Distance: 8.86 m

Remarks:

Report No.:

Test Time: 2022-06-29 16:25:54

## ZONAL LUMINOUS FLUX TABLE

[illegible]

C Range: 0 - 360 Deg

C Interval: 30.0 Deg

Test Speed: High

Temperature:

Operators:

Test Date: 2022-06-29 16:25:54

G Range: 0 - 90 Deg

G Interval: 1.0 Deg

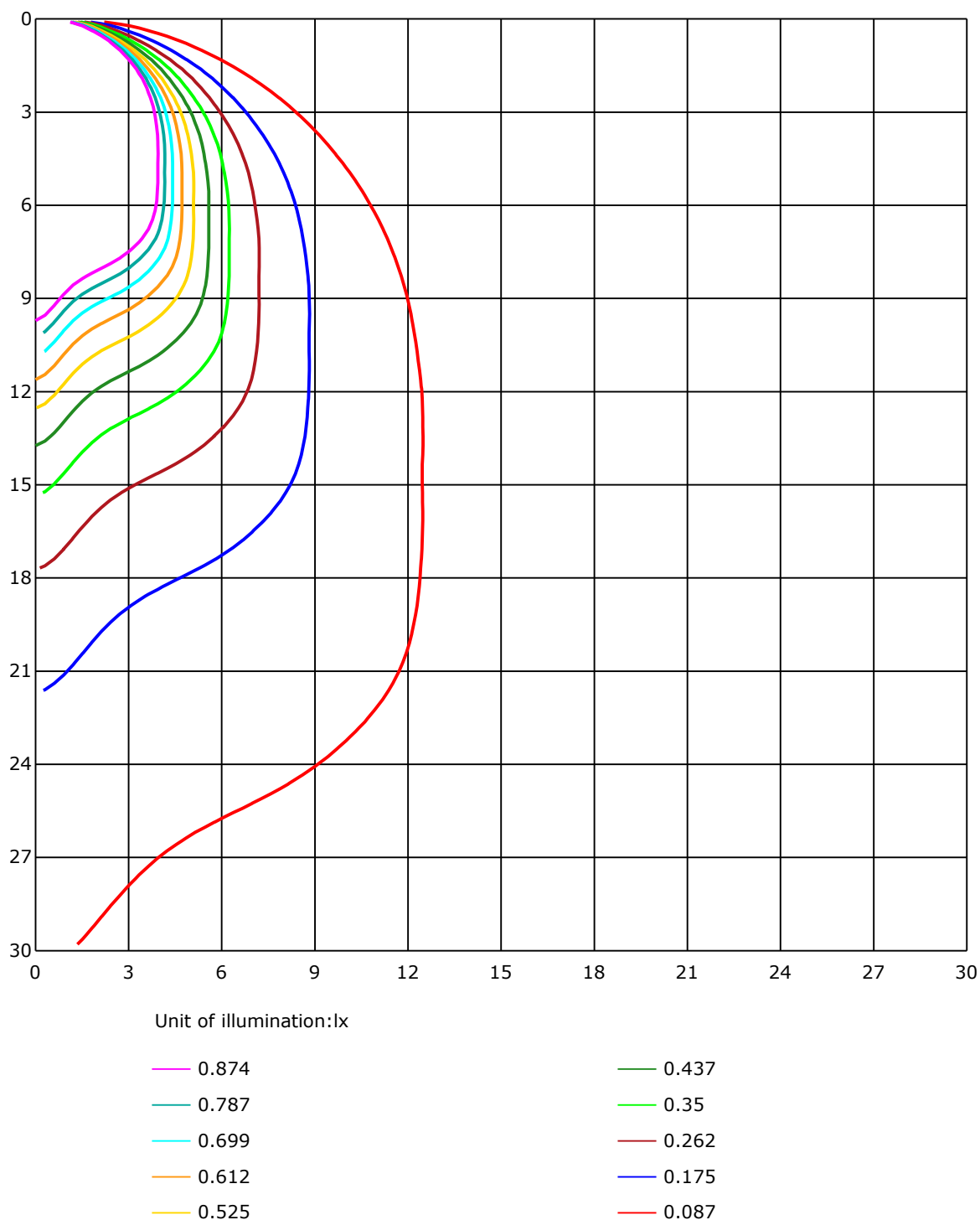
Test System: Huipu CPM-1800B Goniophotometer

Humidity:

Test Distance: 8.86 m

Remarks:

## SPACE ISOLX DIAGRAM



C Range: 0 - 360 Deg

C Interval: 30.0 Deg

Test Speed: High

Temperature:

Operators:

Test Date: 2022-06-29 16:25:54

G Range: 0 - 90 Deg

G Interval: 1.0 Deg

Test System: Huipu CPM-1800B Goniophotometer

Humidity:

Test Distance: 8.86 m

Remarks:



Report No.:

Test Time: 2022-06-29 16:25:54

## LUMINOUS DISTRIBUTION INTENSITY DATA

Gamma\C	C0	C30	C60	C90	C120	C150	C180	C210	C240	C270
G0	82.5	80.93	82.11	81.95	85.33	83.05	82.5	80.93	82.11	81.95
G1	81.33	80.62	81.56	79.91	83.13	81.01	82.74	80.46	82.03	83.76
G2	79.36	79.52	80.38	77.64	80.62	78.81	82.19	79.6	81.4	85.02
G3	76.85	77.71	78.74	75.44	78.26	76.69	80.93	78.34	80.46	85.72
G4	74.18	75.2	76.62	73.16	75.99	74.81	79.28	76.85	79.13	85.88
G5	71.67	72.46	74.26	71.12	74.03	73.08	77.48	75.44	77.64	85.41
G6	69.47	69.71	71.67	69.39	72.22	71.91	75.75	74.1	76.14	84.31
G7	67.67	67.27	69.24	67.75	70.89	71.04	74.26	72.93	74.57	82.74
G8	66.18	65.15	66.96	66.33	69.79	70.57	72.93	71.98	73.24	80.85
G9	65.08	63.58	64.84	65.15	68.92	70.34	71.91	71.12	71.98	78.97
G10	64.21	62.49	63.04	63.98	68.29	70.26	71.28	70.41	70.89	77.09
G11	63.51	61.62	61.54	62.96	67.82	70.1	70.73	69.86	69.86	75.36
G12	63.11	61.07	60.29	62.01	67.35	69.86	70.26	69.24	68.92	73.79
G13	62.72	60.68	59.35	61.07	66.8	69.39	69.86	68.61	68.14	72.46
G14	62.49	60.37	58.56	60.21	66.18	68.77	69.39	67.98	67.35	71.2
G15	62.33	60.21	57.93	59.35	65.39	67.98	68.77	67.2	66.57	70.18
G16	62.17	59.97	57.38	58.56	64.53	67.04	68.14	66.33	65.86	69.16
G17	62.09	59.74	56.99	57.78	63.51	65.94	67.27	65.39	65.08	68.29
G18	62.01	59.58	56.6	56.99	62.49	64.76	66.33	64.45	64.29	67.51
G19	61.86	59.35	56.28	56.36	61.47	63.51	65.23	63.43	63.58	66.88
G20	61.7	59.11	56.05	55.81	60.37	62.33	64.13	62.41	62.8	66.33
G21	61.54	58.8	55.81	55.26	59.35	61.23	63.04	61.39	62.09	65.78
G22	61.31	58.4	55.58	54.79	58.4	60.13	62.01	60.44	61.39	65.31
G23	60.99	57.93	55.34	54.4	57.46	59.11	60.99	59.5	60.6	64.76
G24	60.68	57.46	55.11	54.01	56.6	58.09	59.97	58.64	59.9	64.21
G25	60.37	56.91	54.79	53.62	55.81	57.07	59.11	57.78	59.11	63.58
G26	59.9	56.36	54.48	53.22	55.03	56.21	58.17	56.99	58.33	62.88
G27	59.42	55.73	54.16	52.75	54.32	55.26	57.38	56.21	57.46	62.17
G28	58.8	55.19	53.77	52.28	53.62	54.4	56.6	55.34	56.52	61.31
G29	58.01	54.64	53.3	51.65	52.99	53.54	55.81	54.56	55.58	60.29
G30	57.07	54.09	52.83	51.1	52.28	52.67	55.03	53.69	54.64	59.27
G31	55.89	53.46	52.28	50.4	51.57	51.89	54.24	52.91	53.62	58.09
G32	54.48	52.83	51.73	49.69	50.87	50.95	53.54	51.97	52.52	56.91
G33	53.07	52.05	51.18	48.91	50.16	50.0	52.67	51.02	51.42	55.66
G34	51.5	51.18	50.48	48.04	49.38	49.06	51.89	50.08	50.32	54.4
G35	49.93	50.24	49.77	47.18	48.59	48.12	51.02	49.14	49.14	53.14
G36	48.43	49.3	49.06	46.31	47.73	47.18	50.08	48.04	48.04	51.81

C Range: 0 - 360 Deg

C Interval: 30.0 Deg

Test Speed: High

Temperature:

Operators:

Test Date: 2022-06-29 16:25:54

G Range: 0 - 90 Deg

G Interval: 1.0 Deg

Test System: Huipu CPM-1800B Goniophotometer

Humidity:

Test Distance: 8.86 m

Remarks:

Report No.:

Test Time: 2022-06-29 16:25:54

## LUMINOUS DISTRIBUTION INTENSITY DATA(Continue 1)

Gamma\C	C0	C30	C60	C90	C120	C150	C180	C210	C240	C270
G37	46.94	48.28	48.2	45.37	46.79	46.16	49.14	47.02	46.86	50.48
G38	45.53	47.18	47.34	44.51	45.84	45.22	48.04	46.08	45.84	49.22
G39	44.12	46.16	46.55	43.65	44.9	44.27	46.94	45.14	44.74	47.96
G40	42.86	45.14	45.69	42.63	43.96	43.49	45.92	44.12	43.65	46.79
G41	41.76	44.12	44.9	41.76	43.17	42.55	45.06	43.17	42.55	45.61
G42	40.9	43.1	43.96	40.82	42.47	41.84	44.04	42.23	41.6	44.43
G43	40.03	42.08	43.02	39.96	41.68	40.98	43.17	41.29	40.58	43.17
G44	39.17	41.06	42.23	39.17	40.82	40.27	42.31	40.35	39.64	42.0
G45	38.39	40.11	41.29	38.54	39.88	39.49	41.53	39.49	38.7	40.9
G46	37.68	39.33	40.43	37.92	39.01	38.62	40.58	38.62	37.84	39.8
G47	36.82	38.54	39.56	37.29	38.23	37.92	39.8	37.84	36.89	38.78
G48	36.03	37.84	38.78	36.58	37.44	37.29	39.09	37.05	36.11	37.84
G49	35.32	37.13	37.99	35.8	36.74	36.5	38.31	36.35	35.32	36.89
G50	34.62	36.42	37.21	35.09	36.03	35.87	37.6	35.64	34.54	36.11
G51	33.99	35.8	36.5	34.46	35.4	35.32	36.89	34.93	33.05	35.32
G52	33.36	35.09	35.87	33.83	34.85	34.62	36.27	34.23	33.05	34.54
G53	32.73	34.46	35.17	33.36	34.23	33.99	35.64	33.6	32.34	33.91
G54	32.11	33.83	34.54	32.81	33.68	33.36	34.93	32.89	31.64	33.21
G55	31.48	33.21	33.91	32.18	33.05	32.73	34.3	32.26	31.01	32.5
G56	30.77	32.58	33.28	31.64	32.5	32.03	33.68	31.56	30.22	31.79
G57	30.14	31.87	32.66	31.01	31.95	31.4	32.97	30.85	29.52	31.16
G58	29.52	31.24	32.03	30.46	31.32	30.61	32.26	30.14	28.81	30.46
G59	28.81	30.61	31.32	29.83	30.69	29.91	31.56	29.36	28.1	29.83
G60	28.18	29.91	30.69	29.2	30.07	29.2	30.85	28.57	27.4	29.12
G61	27.4	29.2	29.99	28.5	29.36	28.42	30.14	27.87	26.61	28.42
G62	26.69	28.5	29.28	27.79	28.73	27.63	29.28	27.08	25.9	27.63
G63	25.98	27.79	28.57	27.08	28.02	26.85	28.57	26.3	25.2	26.93
G64	25.2	27.08	27.87	26.38	27.32	26.06	27.87	25.59	23.47	26.14
G65	24.49	26.3	27.16	25.67	26.61	25.28	27.08	24.81	23.79	25.43
G66	23.79	25.59	26.45	24.96	25.9	24.49	26.3	24.02	23.08	24.73
G67	23.08	24.81	25.75	24.18	25.12	23.71	25.51	23.24	22.37	24.02
G68	22.37	24.1	25.04	23.47	24.41	22.92	24.73	22.45	21.74	23.31
G69	21.59	23.39	24.26	22.76	23.63	22.14	23.94	21.74	20.96	22.53
G70	20.88	22.61	23.55	22.06	22.84	21.35	23.16	20.96	20.25	21.82
G71	20.17	21.82	22.84	21.35	22.06	20.57	22.37	20.25	19.47	21.12
G72	19.39	21.12	22.14	20.65	21.27	19.78	21.59	19.47	18.76	20.41
G73	18.6	20.41	21.35	19.94	20.57	19.0	20.8	18.68	17.51	19.7

C Range: 0 - 360 Deg

C Interval: 30.0 Deg

Test Speed: High

Temperature:

Operators:

Test Date: 2022-06-29 16:25:54

G Range: 0 - 90 Deg

G Interval: 1.0 Deg

Test System: Huipu CPM-1800B Goniophotometer

Humidity:

Test Distance: 8.86 m

Remarks:

Report No.:

Test Time: 2022-06-29 16:25:54

## LUMINOUS DISTRIBUTION INTENSITY DATA(Continue 2)

[illegible]

C Range: 0 - 360 Deg

C Interval: 30.0 Deg

Test Speed: High

Temperature:

Operators:

Test Date: 2022-06-29 16:25:54

G Range: 0 - 90 Deg

G Interval: 1.0 Deg

Test System: Huipu CPM-1800B Goniophotometer

Humidity:

Test Distance: 8.86 m

Remarks:





Report No.:

Test Time: 2022-06-29 16:25:54

## LUMINOUS DISTRIBUTION INTENSITY DATA(Continue 3)

Gamma\C	C300	C330	C360							
G0	85.33	83.05	82.5							
G1	87.13	84.62	81.33							
G2	88.47	85.56	79.36							
G3	89.02	85.72	76.85							
G4	88.7	84.94	74.18							
G5	87.45	83.37	71.67							
G6	85.64	81.17	69.47							
G7	83.21	78.58	67.67							
G8	80.7	75.99	66.18							
G9	78.26	75.75	65.08							
G10	75.91	71.28	64.21							
G11	73.79	69.32	63.51							
G12	71.91	67.59	63.11							
G13	70.34	66.25	62.72							
G14	68.92	65.08	62.49							
G15	67.67	64.21	62.33							
G16	66.65	63.27	62.17							
G17	65.86	62.64	62.09							
G18	65.23	62.25	62.01							
G19	64.68	61.7	61.86							
G20	64.29	61.31	61.7							
G21	63.98	61.07	61.54							
G22	63.66	58.01	61.31							
G23	63.35	60.6	60.99							
G24	62.96	60.44	60.68							
G25	62.56	60.29	60.37							
G26	62.17	60.05	59.9							
G27	61.62	59.82	59.42							
G28	60.99	59.5	58.8							
G29	60.29	59.11	58.01							
G30	59.35	58.56	57.07							
G31	58.25	57.93	55.89							
G32	56.99	56.99	54.48							
G33	55.66	55.97	53.07							
G34	54.24	54.79	51.5							
G35	52.75	51.1	49.93							
G36	51.26	52.28	48.43							

C Range: 0 - 360 Deg

C Interval: 30.0 Deg

Test Speed: High

Temperature:

Operators:

Test Date: 2022-06-29 16:25:54

G Range: 0 - 90 Deg

G Interval: 1.0 Deg

Test System: Huipu CPM-1800B Goniophotometer

Humidity:

Test Distance: 8.86 m

Remarks:



Report No.:

Test Time: 2022-06-29 16:25:54

## LUMINOUS DISTRIBUTION INTENSITY DATA(Continue 4)

Gamma\C	C300	C330	C360							
G37	49.85	51.02	46.94							
G38	48.36	49.69	45.53							
G39	46.94	48.28	44.12							
G40	45.53	46.94	42.86							
G41	44.12	45.45	41.76							
G42	42.86	44.12	40.9							
G43	41.68	42.78	40.03							
G44	40.51	41.37	39.17							
G45	39.49	40.35	38.39							
G46	38.54	39.33	37.68							
G47	37.68	38.31	36.82							
G48	36.82	41.84	36.03							
G49	36.03	36.5	35.32							
G50	35.25	35.64	34.62							
G51	34.54	34.93	33.99							
G52	33.91	34.23	33.36							
G53	33.28	33.52	32.73							
G54	32.66	32.97	32.11							
G55	31.95	32.34	31.48							
G56	31.32	31.71	30.77							
G57	30.69	31.24	30.14							
G58	29.99	30.38	29.52							
G59	29.28	29.67	28.81							
G60	28.57	29.04	28.18							
G61	27.79	24.33	27.4							
G62	27.08	27.55	26.69							
G63	26.38	26.77	25.98							
G64	25.59	26.06	25.2							
G65	24.81	25.36	24.49							
G66	24.1	24.65	23.79							
G67	23.39	23.86	23.08							
G68	22.61	23.08	22.37							
G69	21.9	22.37	21.59							
G70	21.19	21.35	20.88							
G71	20.41	20.88	20.17							
G72	19.7	20.17	19.39							
G73	18.92	19.39	18.6							

C Range: 0 - 360 Deg

C Interval: 30.0 Deg

Test Speed: High

Temperature:

Operators:

Test Date: 2022-06-29 16:25:54

G Range: 0 - 90 Deg

G Interval: 1.0 Deg

Test System: Huipu CPM-1800B Goniophotometer

Humidity:

Test Distance: 8.86 m

Remarks:

Report No.:

Test Time: 2022-06-29 16:25:54

## LUMINOUS DISTRIBUTION INTENSITY DATA(Continue 5)

[illegible]

C Range: 0 - 360 Deg

C Interval: 30.0 Deg

Test Speed: High

Temperature:

Operators:

Test Date: 2022-06-29 16:25:54

G Range: 0 - 90 Deg

G Interval: 1.0 Deg

Test System: Huipu CPM-1800B Goniophotometer

Humidity:

Test Distance: 8.86 m

Remarks: